

# Greater Kansas City Alumnae Panhellenic

## Annual Meeting 2023 - Committee Reports

### **PRESIDENT**

*Tammy Hawks/Alpha Chi Omega*

For the Greater Kansas City Alumnae Panhellenic (GKCAP), this has been an exciting year. The women who make up this organization are well educated, creative, dynamic, are different ages, and backgrounds, and they are civic and service leaders in their communities. “Be her badge what it may”, their major purpose is to help build our Alumnae Panhellenic, inform the public about the value of the sorority experience, and provide scholarship awards for sorority college and graduate school women. At the same time, we are having fun building new friendships with local sorority women as we have our meetings and get involved in all our programs and projects. You will hear more about them in the reports from our Standing Committee Chairs that have produced amazing results this year.

Our GKCAP reached a milestone this year by raising \$18,000, providing 14 scholarship awards for college and graduate school sorority women. This is the most scholarship money that has been awarded since we began keeping track in 2006. I want to thank all our members, the members from our 21 other sorority alumnae groups, who have supported our scholarship program through their generous donations.

Our Virtual Day of Giving held in November also added to the success of our scholarship program. Fundraising serves a dual purpose - raising money and bringing sorority women together to connect.

GKCAP selected Hillcrest Transitional Housing as our philanthropy this year. Our women enjoyed learning about this very important organization that provides temporary housing to working families and students that find themselves homeless. We provided donations and worked two weekends at their Thrift Stores.

Another important impact Alumnae Panhellenics can have is working with collegiates, building relationships through their Panhellenic organizations. GKCAP is building a relationship with the UMKC Panhellenic which has four sororities, Alpha Delta Pi, Alpha Sigma Alpha, Chi Omega, and Delta Zeta. We have sponsored two joint meetings with them. At our most recent meeting in April, we provided a Career Development Panel of alumnae sorority women, inviting members of all four sororities to participate. GKCAP wants the UMKC sorority women to see joining an Alumnae Panhellenic group will provide opportunities for them to lead, grow, volunteer, and provide new friendships.

It has been my honor and pleasure to serve as President of Greater Kansas City Alumnae Panhellenic in 2022-2023, “Advancing Sorority Together”.

# Greater Kansas City Alumnae Panhellenic

## Annual Meeting 2023 - Committee Reports

### **BOARD OF ADVISORS**

*LaTasha James/Phi Mu*

The three immediate Past Panhellenic Presidents comprise the Board of Advisors to assist the Executive Committee. Founders' Day emails with custom graphics were sent to each sorority as they celebrated their Founders' Day, a 25/75 raffle generated over \$500 for the Scholarship Fund, and a drawing was held to win a gift card for wearing their sorority pins to meetings. We recognized members' birthdays and updated the Getting to Know You file. Special thanks to Janis Edmon/Sigma Sigma Sigma and Joanna Glaze/Pi Beta Phi for their membership on the Board.

### **ANNUAL MEETING COMMITTEE**

*Libby Julo/Alpha Gamma Delta*

The Annual Meeting Committee welcomes you here today to the 2023 Women of the Year & Scholarship Brunch to experience our Derby-themed celebration, "In the Winner's Circle". We are so happy you are here to share the Panhellenic spirit, to join us in recognizing achievements among our sisterhood, and to raise money for our Scholarship Fund. The Annual Meeting Committee has worked diligently to create a day at the races. We are excited to hear from our speaker and proud to recognize and applaud the Women of the Year and Scholarship Recipients. Our sisters, both collegiate and alumnae, continue to uphold our shared values of service, scholarship, and leadership as evidenced by these amazing women. We hope you enjoy shopping for some unique Silent Auction items and specialty candles, trying your luck at our Derby Game, and grabbing a bottle or two at the wine pull. We are also excited to add some travel package options you can bid on to win. All proceeds benefit the GKCAP Scholarship Fund. Thank You to all those groups, individuals, and committee members for making this fundraising effort a reality. A special Thank You goes out to Sincerely Susan in Lenexa, KS for being a sponsor of today's festivities as well as the Women of Alpha Chi Omega, Mu-Mu Chapter for their generous sponsorship in honor of our Outgoing President, Tammy Hawks. The Annual Meeting Committee greatly appreciates your support today and hopes that everyone enjoys their time together "In the Winner's Circle".

# Greater Kansas City Alumnae Panhellenic

## Annual Meeting 2023 - Committee Reports

### **FRATERNITY EDUCATION COMMITTEE**

***Kim Peak/Alpha Pi***

The Fraternity Education Committee was proud to host two events this year: President's Forum in November and Recruitment 101 in March.

President's Forum was held via Zoom, and we had had 21 attendees representing 14 sororities. We talked about what members want from an Alumnae Association, successful events and locations, leadership, partnership, cost of dues, and more.

Recruitment 101 was held at St. Teresa's Academy with 54 in attendance - 19 PNM's, 20 mothers/friends, 5 committee members, 7 panel members, and 3 Greater Kansas City Alumnae Panhellenic members. We had a panel that consisted of 2 FSL Staff, a recent alumna, and 4 collegians. We had PNM's who will be attending KU, Kansas State, Mizzou, Oklahoma, Arkansas, TCU, Texas Tech, Boston, Colorado, and Indiana. Sara Bedwell/Alpha Delta Pi was our presenter and panel facilitator. We viewed a short video from NPC, and then Sara delivered the NPC presentation. We then had plenty of questions for our panelists and the PNM's and family/friends joined in with their questions. It was an informative evening of education and sisterhood!

### **MEDIA MANAGEMENT COMMITTEE**

***Sara Bedwell/Alpha Delta Pi***

We continue to make our online presence a priority, and we love connecting with all of you! We enjoy engaging online with NPC, our Inter/National organizations, alumnae clubs/associations, alumnae, collegians, prospective members, and parents. Our website is full of information about our meetings and programs including an online form for prospective members to submit requests for recruitment recommendation letters. We also have a link to the Greater Kansas City Community Foundation website for donations to our Scholarship Fund.

We currently have over 1,400 followers and 1,500 who like our page on Facebook, and we post content every few days. We would love to grow our Instagram page, which is around 350 followers, so please give us a like! Some of our most popular content series this year were Day of Giving, Founders' Days, Scholarship recipients, Women of the Year, and sorority sisterhood and philanthropy posts sent in by your groups. Please encourage your sisters, Panhellenic friends, prospective members, and their parents to follow us! Thank you to everyone who has been engaging with us on social media and our website!

Website – [www.kcpanhel.com](http://www.kcpanhel.com)

Instagram - @gkcalumnaepanhellenic

Facebook– <https://www.facebook.com/KCPanhellenic>

Twitter - @KCPanhellenic

# Greater Kansas City Alumnae Panhellenic

## Annual Meeting 2023 - Committee Reports

### **MEETINGS/PROGRAM COMMITTEE**

***Laurie Tourtellot/Delta Delta Delta***

This year we chose to support Hillcrest Transitional Housing as our philanthropic effort. At our November meeting, three staff members educated us about their organization's objective to solve homelessness by addressing the total life situation of the families served. We collected Birthday Party Kits, Welcome Home Baskets, and monetary donations for a total value of \$866. On a Saturday in November, nine members and three guests volunteered at the Hillcrest Thrift Shops in Lee's Summit and Lenexa, saving Hillcrest around \$696 in labor costs.

### **SCHOLARSHIP COMMITTEE**

***Toni Mitchum/Chi Omega***

The Greater Kansas City Alumnae Panhellenic provides an outstanding service to local Panhellenic sorority women through awarding educational scholarships. Funds are raised through generous donations from Sorority Alumnae Groups, the Annual Meeting, and through tax-deductible gifts on our Day of Giving! We are so humbled by the outpouring of love and support of our Scholarship Fund.

To qualify, an applicant must be an NPC sorority member and a be senior or graduate student in fall 2023. Applicants must have at least a 3.2 GPA; be a resident of the nine-county Greater Kansas City area and be a full-time student at a Missouri or Kansas college or university.

This year, our committee received many applications. Applicants were evaluated according to their scholastic achievement, college and community activities, recommendation letter, and interview skills. Out of the applicant pool, we invited several to interview via Zoom.

We are so proud to award \$18,000 in scholarships to fourteen extremely deserving collegians! Colleges represented were Kansas, Kansas State, Mizzou, William Jewell, Baker, and UMKC. Sororities represented were Alpha Chi Omega, Alpha Delta Pi, Alpha Xi Delta, Chi Omega, Delta Delta Delta, Kappa Delta, Kappa Kappa Gamma, Phi Mu, and Zeta Tau Alpha.

# Greater Kansas City Alumnae Panhellenic

## Annual Meeting 2023 - Committee Reports

### 2023 SCHOLARSHIP RECIPIENTS



Avery Amerio  
Olathe Northwest HS  
Chi Omega, University of Kansas  
Major: Pre-Law



Beth Baum  
Spring Hill HS  
Alpha Chi Omega, Baker University  
Major: Biochemistry and Spanish

# Greater Kansas City Alumnae Panhellenic

## Annual Meeting 2023 - Committee Reports



Brenna Richart  
Notre Dame De Sion HS  
Delta Delta Delta, University of Kansas  
Major: Master of Architecture



Brynesha Griffin-Bey  
Lee's Summit West HS  
Zeta Tau Alpha, William Jewell College  
Major: Music Education

# Greater Kansas City Alumnae Panhellenic

## Annual Meeting 2023 - Committee Reports



Elizabeth Hildreth  
Louisburg HS  
Alpha Delta Pi, Kansas State University  
Major: Physical Therapy, KU Med



Grace Winheim  
Park Hill HS  
Phi Mu, University of Missouri-Columbia  
Major: Biological Sciences

# Greater Kansas City Alumnae Panhellenic

## Annual Meeting 2023 - Committee Reports



Juliann Leak  
Staley HS  
Kappa Kappa Gamma, University of Missouri-Columbia  
Major: Medicine, KU Med



Kate Wagenheim  
Shawnee Mission West HS  
Zeta Tau Alpha, William Jewell College  
Major: Physical Therapy, KU Med



# Greater Kansas City Alumnae Panhellenic

## Annual Meeting 2023 - Committee Reports



Selia Walton  
Blue Springs South HS  
Chi Omega, University of Kansas  
Major: Project Management and Strategic Communications



Sophie Hewitt  
Notre Dame de Sion HS  
Alpha Xi Delta, Kansas State University  
Major: Human Development and Family Studies, Grad school UMKC in the fall.

# Greater Kansas City Alumnae Panhellenic

## Annual Meeting 2023 - Committee Reports



Sophie Sun  
Shawnee Mission East HS and The Chinese School of Greater KC  
Alpha Delta Pi, University of Missouri-Kansas City  
Major: BA/MD 6-year Program



Sydney Stuke  
Mill Valley HS  
Kappa Delta, Kansas State University  
Major: Accounting

# Greater Kansas City Alumnae Panhellenic

## Annual Meeting 2023 - Committee Reports



Trinity Gilbert  
Lee's Summit West HS  
Alpha Chi Omega, Baker University  
Major: Business

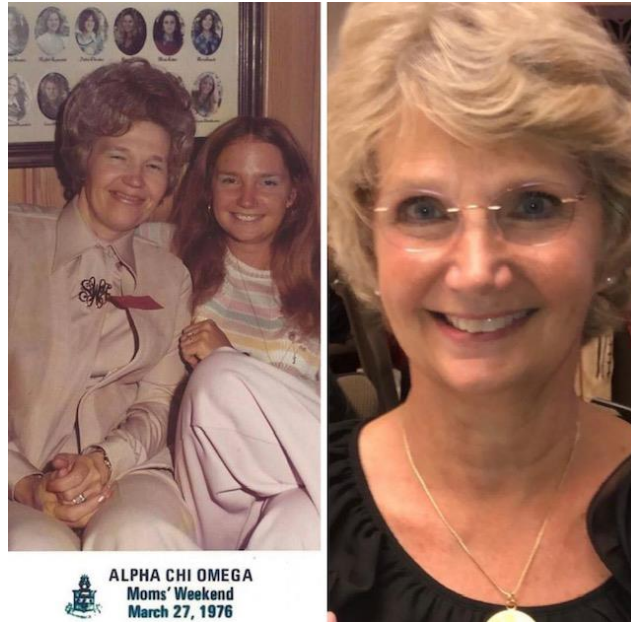


Tori Ward  
Blue Valley HS  
Kappa Kappa Gamma, Kansas State University  
Major: Business and Modern Languages

# Greater Kansas City Alumnae Panhellenic

## Annual Meeting 2023 - Committee Reports

### 2023 WOMEN OF THE YEAR



**Alpha Chi Omega**  
Bev Nichols  
University of Missouri-Columbia



**Alpha Delta Pi**  
Stephanie Davis  
Kansas State University

# Greater Kansas City Alumnae Panhellenic Annual Meeting 2023 - Committee Reports



**Alpha Gamma Delta**  
Jackie Nicol  
University of Kansas



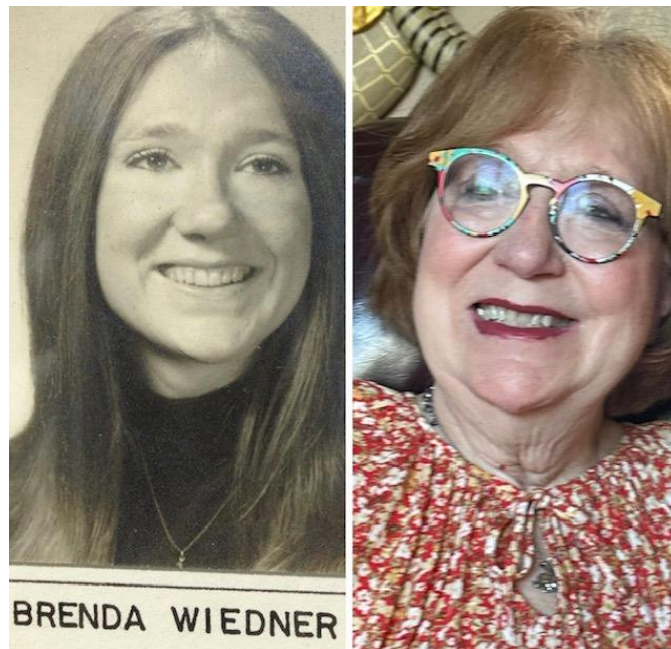
**Alpha Omicron Pi**  
Cindy Nielsen  
University of Nebraska-Kearney

# Greater Kansas City Alumnae Panhellenic

## Annual Meeting 2023 - Committee Reports



**Alpha Phi**  
Tori Davis  
Washburn University



**Alpha Sigma Alpha**  
Brenda Gustafson  
Pittsburg State University

# Greater Kansas City Alumnae Panhellenic

## Annual Meeting 2023 - Committee Reports



**Alpha Xi Delta**  
Audrey Irick  
Kansas State University



**Chi Omega**  
Jennifer Alderdice  
Kansas State University

# Greater Kansas City Alumnae Panhellenic

## Annual Meeting 2023 - Committee Reports



**Delta Delta Delta**  
Peggy Swaney  
University of Missouri-Columbia



**Delta Gamma**  
Cathy Lemon  
William Woods University



# Greater Kansas City Alumnae Panhellenic

## Annual Meeting 2023 - Committee Reports



**Delta Zeta**  
Holly Weiss  
Fort Hays State University



**Gamma Phi Beta**  
Alicia O'Connell  
University of Nebraska-Kearney

# Greater Kansas City Alumnae Panhellenic

## Annual Meeting 2023 - Committee Reports



**Kappa Alpha Theta**  
Joy Beth Scammahorn-Orr  
Kansas State University



**Kappa Delta**  
Kelly Gerding  
University of Missouri-Columbia

# Greater Kansas City Alumnae Panhellenic

## Annual Meeting 2023 - Committee Reports



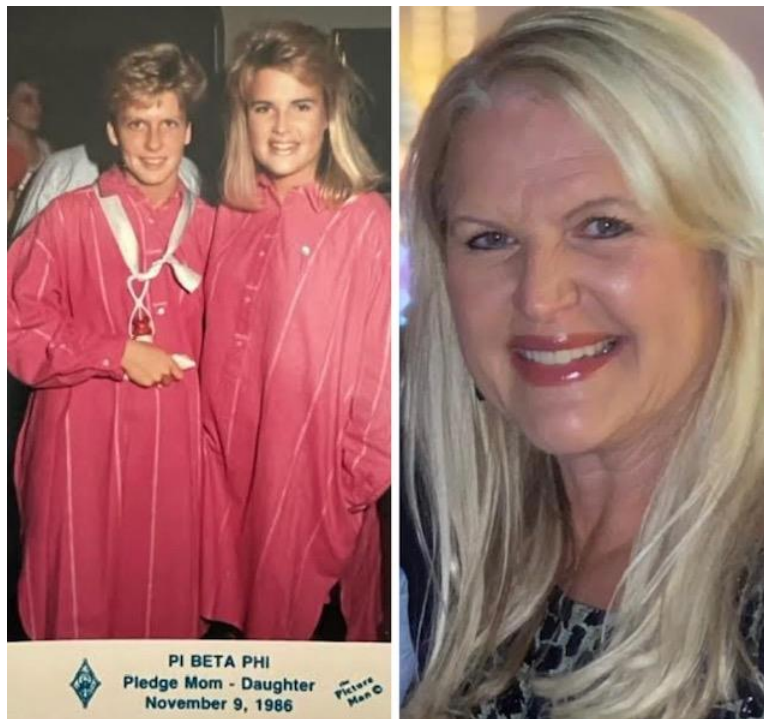
**Kappa Kappa Gamma**  
Katherine Lee  
Kansas State University



**Phi Mu**  
LaTasha James  
Baker University

# Greater Kansas City Alumnae Panhellenic

## Annual Meeting 2023 - Committee Reports



**Pi Beta Phi**  
Nan McConnell  
University of Nebraska-Lincoln



**Sigma Sigma Sigma**  
Dr. Kris Schuler  
University of Central Missouri

# Greater Kansas City Alumnae Panhellenic

## Annual Meeting 2023 - Committee Reports



**Zeta Tau Alpha**  
Christy Barber  
University of Missouri-Columbia

## Greater Kansas City Alumnae Panhellenic

### 2022 NPC Awards

*Alumnae Panhellenic –  
Citation of Merit Award*

*Alumnae Panhellenic –  
Programming Excellence Award*



# Greater Kansas City Alumnae Panhellenic

## Annual Meeting 2023 - Committee Reports

### PANHELLENIC OFFICERS

	<u>2022-2023</u>	<u>2023-2024</u>
<b>President</b>	<b>Tammy Hawks</b> Alpha Chi Omega	<b>Sara Bedwell</b> Alpha Delta Pi
<b>Vice President</b>	<b>Sara Bedwell</b> Alpha Delta Pi	<b>Libby Julo</b> Alpha Gamma Delta
<b>Secretary</b>	<b>Robin Crick</b> Kappa Delta	<b>Robin Crick</b> Kappa Delta
<b>Treasurer</b>	<b>Amy Aldrich</b> Zeta Tau Alpha	<b>Amy Aldrich</b> Zeta Tau Alpha
<b>Ex-Officio</b>	<b>LaTasha James</b> Phi Mu	<b>Tammy Hawks</b> Alpha Chi Omega

### 2022 – 2023 DELEGATES & ALTERNATE DELEGATES

	<u>Delegate</u>	<u>Alternate Delegate(s)</u>
Alpha Chi Omega	Tammy Hawks	Diane Blackwelder
Alpha Delta Pi	Sara Bedwell	Martha Steele      Lynn Patton
Alpha Gamma Delta	Libby Julo	Kathy Werner
Alpha Omicron Pi	Kim Hendricks	
Alpha Phi	Kim Peak	Robin Beck
Alpha Sigma Alpha	Amanda Lind	Donna Miller      Brenda Gustafson
Alpha Xi Delta	Shelli Jaye	Anne Shields
Chi Omega	Toni Mitchum	Kim Danaher
Delta Delta Delta	Laurie Tourtellot	Julie Goehrung
Delta Gamma	Susan Richart	Barbara Haviland
Delta Zeta	Katie Schatte	Karen Fahrmeier
Gamma Phi Beta	Tammy Laudan	Nancy Steen
Kappa Alpha Theta	Fran Gerritz	Denise Easley
Kappa Delta	Marla Worthington	Robin Crick
Kappa Kappa Gamma	Hillary Murray	Jordan Frost
Phi Mu	LaTasha James	Becky Rossman
Pi Beta Phi	Joanna Glaze	Sibley Frye
Sigma Delta Tau	Carol Goldstein	
Sigma Kappa	Nancy Holliday	Sheila Wilson
Sigma Sigma Sigma	Janis Edmon	Revelyn Alpaugh
Zeta Tau Alpha	Kathy Sims	Amy Aldrich

# Greater Kansas City Alumnae Panhellenic

## Annual Meeting 2023 - Committee Reports



Website: [kcpanhel.com](http://kcpanhel.com)

Facebook: [facebook.com/KCPanhellenic](https://facebook.com/KCPanhellenic)

Twitter: [@KCALumPanhel](https://twitter.com/KCALumPanhel)

Instagram: [gkc\\_alumnae\\_panhellenic](https://www.instagram.com/gkc_alumnae_panhellenic)

Venmo: [@kcpanhel](https://venmo.com/@kcpanhel) (with last four of the phone 2443)

PayPal: [paypalme/kcpanhel](https://www.paypalme.com/kcpanhel)

### SCHOLARSHIP DONATIONS

Credit Card \* <http://www.kcpanhel.com/donations.html>

Check \* Payable To: Greater Kansas City Community Foundation

Memo Line: GKCAP Scholarship Fund OR grea14

Mail To: GKCCF

1055 Broadway Blvd., Ste 130

Kansas City, MO 64105